

AD  
Alliance Developments

# Glenmasis

Seven exclusive homes in an historic setting



*A home for all seasons*

c. 1800



Glenmavis Distillery produces "Glenmavis Dew"

c. 1831



Glenmavis House

c. 1914



WW1 Troop billet

c. 1952



Canadian owner tries to re-open distillery

c. 1960



House modernised

c. 2006



AD redevelop original house and create new homes

# Unique and exclusive



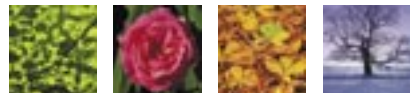
The new Glenmavis residential development by AD is set in the grounds of historic Glenmavis House, It was built in 1831 by John McNab, the proprietor of Glenmavis Distillery which produced over 80,000 gallons of 'Glenmavis Dew' pure malt whisky every year.

Now offering a different taste of Scotland, the original house is being transformed into two unique 2-bedroom flats, each with its own private entry, while within the grounds AD are developing five new 4-bedroom

detached luxury homes each with double en-suites and double garage.

These are amongst the latest in a growing portfolio of homes in carefully considered locations by Alliance Developments.

The development at Glenmavis offers you the opportunity of a new home in an exclusive grouping of only seven new residences. This unique location is set in established wooded grounds and is well set back from the main road.



*A home for all seasons*





# Glenmavis

## Sales terms and conditions

To reserve a property an initial deposit is required with a further advance payable on conclusion of missives. Further details available upon request.

## Further information

Should you be interested in a particular property, we would be delighted to provide you with further detailed information. Please contact us on 0131 319 1551.

## Important notice

Any areas, measurements and distances are approximate. The text, artists impressions and plans are for guidance only and are not necessarily comprehensive. Purchasers must satisfy themselves by inspection or otherwise.



Glenmavis is located on the outskirts of Bathgate on Torphichen Road. This location offers open views of the surrounding countryside and benefits from nearby shops, pubs and sports facilities. Bathgate railway station is less than half a mile away.

For further information please call  
**0131 319 1551** or visit our website  
**www.ADhomes.co.uk**



**www.ADhomes.co.uk**